



*IN THE WASHROOM
WE'VE GOT EVERYTHING
FIGURED OUT!*

Contents

Introduction	02
Economising Habits	04
Ecomatic Sugarcane Tissue	06
Ecomatic Tissue Dispensers	10
Autocut Roll Towel	14
Autocut Dispenser	18
Compact Hand Towel	22
Compact Hand Towel Dispenser	26
Luxury Foam Soap	30
Foaming Hand Sanitiser	34
Manual Soap/Sanitiser Dispenser	38
Auto Soap/Sanitiser Dispenser	42
Antibacterial Protection	46

An introduction into FIG Products

Welcome to the wonderful world of Systems by FIG

AT FIG WE TAKE PRIDE IN INNOVATION, SUSTAINABILITY AND REDUCING COSTS IN THE WASHROOM.

FIG vs. Competitors

FACT!

FIG is the **only washroom system manufacturer** that supplies sustainable sugarcane and bamboo consumables!

FACT!

One case of FIG Ecomatic Classic is equivalent to **SIX cases of 150m mini jumbo's!**

FACT!

One case of FIG Autocut roll towel is equivalent to almost **SIX cases of C-fold hand towels!**

FACT!

One refill bottle of FIG Luxury Hand Soap is equivalent to **24 x 500 ml bottles of liquid soap!**

Our story began as **experts in design and manufacture** of washroom dispenser products. We have developed an inspired full washroom system which uses our very own **eco-friendly sustainable sugarcane and bamboo** consumables.

With hygiene, affordability, and sustainability at the forefront of our minds, the FIG system is designed to save money each month through **cost-in-use innovation**. Our washroom system also focuses on **economising the habits** of end-users, helping to reduce excess consumption and waste.

Where you see these symbols:



Sustainable Sugarcane or Bamboo has been used to make our products.

***SUGARCANE TISSUE & BAMBOO TOWEL MAKES YOUR WASHROOM
MORE SUSTAINABLE AND SAVES TREES!***



Economising Habits

Save money, reduce wastage, save resources.

OUR PRODUCTS ECONOMISE THE HABITS OF END USERS, WHILE STILL PROVIDING EFFECTIVE AND HYGIENIC WASHROOM SOLUTIONS.

FACT! Our products give you back control that will ultimately lead to you making **financial savings!**

FACT! Our clever design of dispensers and consumables maximises efficiency and reduces wastage. With FIG Systems you'll **save money** and resources without compromising on **hygiene**.

FACT! You're paying for the consumables, why give them so much?

But what does Economising Habits really mean?

At FIG we understand the **psychology** of end users, so we **design** our products with that in mind. That's where **Economising Habits** of end users comes in.

You can't control the number of times someone pumps the soap dispenser or how many towels they take **but we can control** the amount of soap or paper they get every time they take it. We've **improved** the size of our towel sheets and the dosage of our soap so they **go further** – giving you more **bounce for the ounce**.

With FIG Systems everyone's happy.



GET MORE BANG FOR YOUR BUCK!



**FIG SYSTEMS - DESIGNED TO SAVE YOU MONEY
AND THE PLANETS RESOURCES!**



Ecomatic Sugarcane Tissue

FACT!

Our incredibly **bright white**, soft and durable **sustainable** Ecomatic Sugarcane Tissue is made from the fibrous leftovers of the sugarcane plant after the sugar extraction process.

FACT!

A pallet of our Ecomatic Classic Sugarcane Tissue paper contains over 1 million sheets meaning an overall **lower carbon footprint!**

FACT!

Independent assessments have shown that **Sugarcane & Bamboo have a much lower carbon footprint** than recycled paper made in the UK, even after factoring in the shipping of the sugarcane or bamboo products from Asia!

Short, delicate sugarcane fibres enable easy breakdown of the tissue, making it better for washroom facilities than bamboo tissue. Our rolls come individually wrapped in paper to keep them **hygienic**. The **sheet optimisation** also drastically **reduces wastage** and means more sheets per pallet.

Features:



Sugarcane



Sustainable



Soft



Innovative



Reduced Waste*
*with Sheet Optimisation

Benefits:

- ✓ Money saving
- ✓ Reduced waste
- ✓ Easier to flush
- ✓ Lower carbon footprint
- ✓ Lasts longer
- ✓ Compact to store

**SUGARCANE IS HARVESTED EVERY 11 MONTHS -
WHEREAS TREES TAKE 30 YEARS! SO,
IT'S MUCH BETTER FOR THE ENVIRONMENT!**



Ecomatic Classic Sugarcane Tissue Tech Specs:

Product code	FIG903M
Sheet thickness	15 gsm 2-ply
Sheet material	sugarcane & mixed fibres
Roll length	909 sheets
Case quantity	24,543 sheets (27 rolls)
Case dimensions	400 x 400 x 295 mm
Case weight	7.5 kg
UK Pallet	1000 x 1200 x 2200 mm
Quantity per layer	6 cases
Quantity per pallet	42 cases
Weight per pallet	330 kg (including 15 kg pallet)
Euro pallet	800 x 1200 x 2200 mm
Quantity per layer	6 cases
Quantity per pallet	42 cases
Weight per pallet	339 kg (including 24 kg pallet)



*A PALLET OF OUR
ECOMATIC CLASSIC
SUGARCANE TISSUE PAPER
CONTAINS OVER 1 MILLION SHEETS,
MEANING AN OVERALL LOWER
CARBON FOOTPRINT!*

Ecomatic Luxury Sugarcane Tissue Tech Specs:

Product code	FIG903L
Sheet thickness	18 gsm 2-ply embossed
Sheet material	sugarcane & mixed fibres
Roll length	636 sheets
Case quantity	17,172 sheets (27 rolls)
Case dimensions	400 x 400 x 295 mm
Case weight	6.3 kg
UK Pallet	1000 x 1200 x 2200 mm
Quantity per layer	6 cases
Quantity per pallet	42 cases
Weight per pallet	280 kg (including 15 kg pallet)
Euro pallet	800 x 1200 x 2200 mm
Quantity per layer	6 cases
Quantity per pallet	42 cases
Weight per pallet	289 kg (including 24 kg pallet)



*SUGARCANE IS A CLASS C4 PLANT,
ABSORBING MORE CARBON DIOXIDE
(CO2) AND PRODUCING 35% MORE
OXYGEN THAN TREES.*

Ecomatic Tissue Dispenser

FACT!

Our **easy-fill** dispenser **holds 1,818 sheets** when full, and the **infinity paper** feature makes it easy to refill while second roll is in use!

FACT!

Our compact Ecomatic dispenser has a **seamless one-piece cover**, making it easy to clean – with no crevices to gather nasties.

FACT!

Our dispensers focus on **reducing waste, costs and resources**, with internal feed restrictor to slow usage, and a twin roll dispenser meaning no stub roll waste.

Unlike other providers, we take as much pride in the **style, economics and ergonomics** of our dispensers as we do the consumables that fill them. We design them all ourselves!

"There's balance and synergy in all aspects of our system, the dispenser and the tissue. This means the benefits of both parts are maximised by their symbiotic use."

Our White ABS dispenser has inbuilt antibacterial protection impregnated in the casing – so any germs or bacteria that land on its surface are eliminated by microscopic IONs (we'll explain the science behind it later!). A valuable feature in a post Covid-19 world.

Features:



Internal Feed Restrictor



Infinity Paper



Streamline Design
Hygienic One-Piece Cover



Antibacterial Protection
(White Dispensers only)



Lock Or Push Button Options



Security

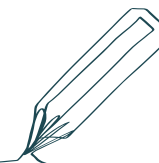


Benefits:

- ✓ No stub roll waste
- ✓ 1,818 sheets per dispenser fill
- ✓ Easy-clean

Colours: White ABS, Black ABS, Stainless Steel

OUR ECOMATIC DISPENSERS HAVE A FEED RESTRICTOR INSIDE TO SLOW DOWN THE ROLLS AND SAVE YOU MONEY!



Ecomatic Tissue Dispenser

Tech Specs:

Product codes	FIG1903W (White ABS), FIG1903B (Black ABS), FIG1903S (Stainless Steel)
Product description	Ecomatic Toilet Tissue Roll Dispenser
Dispenser material	ABS or Stainless Steel
Dispenser capacity	1,818 sheets/2 rolls
Dispenser dimensions	318 x 167 x 160 mm
Dispenser weight	0.85 kg/ABS, 1.68 kg/SS
Case quantity	6 pcs
Case dimensions	373 x 515 x 342 mm
Case weight	6.3 kg/ABS, 10.1 kg/SS
UK Pallet	1000 x 1200 x 2200 mm
Quantity per layer	4 cases/24 pcs
Quantity per pallet	24 cases/144 pcs
Weight per pallet	166 kg/ABS, 257 kg/SS (including 15 kg pallet)
Euro pallet	800 x 1200 x 2200 mm
Quantity per layer	4 cases/24 pcs
Quantity per pallet	24 cases/144 pcs
Weight per pallet	175 kg/ABS, 266 kg/SS (including 24 kg pallet)
Antibacterial Protection	White only

WE DESIGN
OUR DISPENSERS
AND CONSUMABLES
OURSELVES!



OUR WHITE DISPENSERS INCLUDE
ANTIBACTERIAL PROTECTION.



Autocut Roll Towel

FACT! Bamboo has natural **anti-bacterial** properties that's ideal for hand towels.

FACT! The **long and strong** bamboo fibres have a **great wet strength** and drying capability.

FACT! There are up to **5,400 sheets per case** of Autocut towel rolls, meaning a **lower carbon footprint** and they're easier to store.

We give you carefully thought-out options on towel choices to choose from: **Sustainable Bamboo, Recycled White and Recycled Blue**. The **single sheet dispensing** to **reduce usage and waste** means the product will go further than most!

And, like our other paper consumables, the rolls come **individually wrapped** in paper for **added hygiene** benefits as well as **reducing the use of plastic** wrapping.

Features:



Strong



Eco/Sustainable



Single Sheet
Dispensing



Reduced Waste



Recycled



Bamboo



**STEVE SHELLEY'S (MA BSC) ENVIRONMENTAL ASSESSMENT
DEEMED THE BAMBOO FROM ASIA TO HAVE LOWER CARBON
FOOTPRINT THAN RECYCLED PAPER MADE IN THE UK,
EVEN FACTORING IN SHIPPING.**



Autocut Roll Towel

Tech Specs:

Product code	FIG905B
Product description	FIG Bamboo roll towel
Sheet thickness	40 gsm 1-ply
Sheet material	Bamboo & mixed fibres
Roll length	782 sheets
Case quantity	4,692 sheets (6 rolls)
Case dimensions	365 x 535 x 200 mm
Case weight	8.15 kg
UK Pallet	1000 x 1200 x 2150 mm
Quantity per layer	4 cases
Quantity per pallet	40 cases
Weight per pallet	341 kg (including 15 kg pallet)
Euro pallet	800 x 1200 x 2150 mm
Quantity per layer	4 cases
Quantity per pallet	40 cases
Weight per pallet	350 kg (including 24 kg pallet)

Product code	FIG905RW
Product description	FIG Recycled White roll towel
Sheet thickness	40 gsm 1-ply
Sheet material	Recycled White
Roll length	900 sheets
Case quantity	5,400 sheets (6 rolls)
Case dimensions	415 x 600 x 205 mm
Case weight	9.3 kg
UK Pallet	1000 x 1200 x 2200 mm
Quantity per layer	4 cases
Quantity per pallet	40 cases
Weight per pallet	386 kg (including 15 kg pallet)
Euro pallet	800 x 1200 x 2200 mm
Quantity per layer	4 cases
Quantity per pallet	40 cases
Weight per pallet	395 kg (including 24 kg pallet)

Product code	FIG905RB
Product description	FIG Recycled Blue roll towel
Sheet thickness	45 gsm 1-ply
Sheet material	Recycled Blue
Roll length	665 sheets
Case quantity	3,990 sheets (6 rolls)
Case dimensions	365 x 533 x 200 mm
Case weight	7.3 kg
UK Pallet	1000 x 1200 x 2150 mm
Quantity per layer	4 cases
Quantity per pallet	40 cases
Weight per pallet	308 kg (including 15 kg pallet)
Euro pallet	800 x 1200 x 2150 mm
Quantity per layer	4 cases
Quantity per pallet	40 cases
Weight per pallet	317 kg (including 24 kg pallet)



BUY BAMBOO, SAVE TREES.

Autocut Dispenser

FACT!

Our Autocut dispensers are tailored to deliver **single sheet dispensing**, and one fill will hold up to **900 sheets**.

FACT!

Our Autocut dispenser has a hygienic **seamless one-piece cover and self-presenting sheets**, making them easier to clean and removing a touch point.

FACT!

We also focus on **reducing wastage** and **unnecessary usage**, which turns into **savings** for our consumers.

We take as much pride in the style, **economics and ergonomics** of our dispensers as we do the consumables that fill them. All FIG Autocut Towel rolls fit all FIG Autocut Dispensers. They're easy to fill and come with the options of push button or lock – so you can ensure your rolls are secure in situ.

The White ABS dispenser has **Antibacterial Protection** built-in to the outer casing as standard – so any germs or bacteria that make their way onto its surface are eliminated by microscopic IONs (the science will follow shortly).

Features:



Single Sheet Dispensing



Streamline Design
Hygienic One-Piece Cover



Antibacterial
Protection
(White dispensers only)



Easy Access



Innovative



Lockable

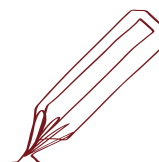
Benefits:

✓ Easy fill ✓ Easy clean ✓ Hygienic ✓ Secure ✓ Up to 900 sheets per fill

Colours: White ABS, Black ABS or Stainless Steel



**SINGLE SHEET DISPENSING -
MORE HYGIENIC AND REDUCES USAGE.**



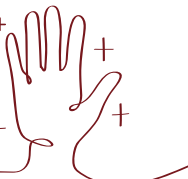
Autocut Dispenser

Tech Specs:

Product code	FIG1905W (White ABS), FIG1905B (Black ABS), FIG1905S (Stainless Steel)
Product description	Autocut roll towel dispenser
Dispenser material	ABS or Stainless Steel
Dispenser capacity	Up to 900 sheets
Dispenser dimensions	360 x 300 x 219 mm
Dispenser weight	2.7 kg/ABS, 4.8 kg/SS
Case quantity	4 pcs
Case dimensions	477 x 630 x 387 mm
Case weight	11.2 kg/ABS, 19.6 kg/SS
UK Pallet	1000 x 1200 x 2040 mm
Quantity per layer	6 cases/24 pcs
Quantity per pallet	18 cases/72 pcs
Weight per pallet	217 kg/ABS, 368 kg/SS (including 15 kg pallet)
Euro pallet	800 x 1200 x 2040 mm
Quantity per layer	3 cases/12 pcs
Quantity per pallet	9 cases/36 pcs
Weight per pallet	125 kg/ABS, 200 kg/SS (including 24 kg pallet)

FIG DISPENSERS HAVE
A ONE-PIECE EASY-CLEAN
FRONT COVER.

OUR WHITE ABS DISPENSERS INCLUDE
ANTIBACTERIAL PROTECTION.



Compact Hand Towel

FACT! Long and strong bamboo fibres have **great wet strength, great drying capability**, and the added benefit of **natural anti-bacterial properties**.

FACT! Their compact nature means that **a case holds up to 4,200 sheets!** They take up far less storage space.

FACT! Our compact hand towels are **the slimmest on the market!** DDA compliant, sleek and beautiful with cost-saving benefits!

Our Compact Hand Towels **Economise Habits** of users – meaning **less usage and less wastage**. And, on the subject of saving money, they come designed for **single sheet dispensing** to reduce unnecessary usage too.

They come in 3 varieties: **Sustainable Bamboo, Recycled and Virgin towel**. They all come wrapped in paper sleeves – **zero plastic packaging** – reducing their impact on the environment.

Features:



DDA
Compliant



Reduced
Waste



Single Sheet
Dispensing



Strong



Compact



Eco-Friendly



Bamboo



Recycled



Virgin

Benefits:

- ✓ Economise Habits
- ✓ Money saving
- ✓ Save on space

ZERO PLASTIC!
REDUCE USAGE, REDUCE WASTAGE.
SAVE MONEY, SAVE TREES.



Compact Hand Towel

Tech Specs:

Product code	FIG904B
Product description	FIG Bamboo compact hand towel
Sheet thickness	40 gsm 2-ply (20 gsm/ply)
Sheet material	Bamboo & mixed fibres
Sleeve quantity	140 sheets
Case quantity	4,200 sheets (30 sleeves)
Case dimensions	313 x 398 x 370 mm
Case weight	7.4 kg
UK Pallet	1000 x 1200 x 2000 mm
Quantity per layer	9 cases
Quantity per pallet	45 cases
Weight per pallet	348 kg (including 15 kg pallet)
Euro pallet	800 x 1200 x 2000 mm
Quantity per layer	6 cases
Quantity per pallet	30 cases
Weight per pallet	246 kg (including 24 kg pallet)

Product code	FIG904R
Product description	FIG Recycled compact hand towel
Sheet thickness	40 gsm 2-ply (20 gsm/ply)
Sheet material	Recycled
Sleeve quantity	150 sheets
Case quantity	2,400 sheets (16 sleeves)
Case dimensions	260 x 565 x 190 mm
Case weight	4.6 kg
UK Pallet	1000 x 1200 x 2050 mm
Quantity per layer	6 cases
Quantity per pallet	60 cases
Weight per pallet	291 kg (including 15 kg pallet)
Euro pallet	800 x 1200 x 2050 mm
Quantityper layer	6 cases
Quantityper pallet	60 cases
Weight per pallet	300 kg (including 24 kg pallet)

Product code	FIG904V
Product description	FIG Virgin compact hand towel
Sheet thickness	40 gsm 2-ply (20 gsm/ply)
Sheet material	Virgin
Sleeve quantity	150 sheets
Case quantity	2,400 sheets (16 sleeves)
Case dimensions	260 x 565 x 190 mm
Case weight	4.6 kg
UK Pallet	1000 x 1200 x 2050 mm
Quantity per layer	6 cases
Quantity per pallet	60 cases
Weight per pallet	291 kg (including 15 kg pallet)
Euro pallet	800 x 1200 x 2050 mm
Quantity per layer	6 cases
Quantity per pallet	60 cases
Weight per pallet	300 kg (including 24 kg pallet)



**BAMBOO HAS
NATURAL ANTI-BACTERIAL
PROPERTIES MAKING IT PERFECT
FOR USE IN THE
WASHROOM**

Compact Hand Towel Dispenser

FACT! Our sleek dispenser holds **375 sheets when full** and offers self-presenting single sheet dispensing.

FACT! Our Compact Hand Towel dispensers are **DDA compliant**, in fact they're the **slimmest on the market!**

FACT! The compact hand towel dispenser has a **hygienic one-piece front cover**, with the option of Antibacterial Protection in the White ABS product.

Our Slimline Compact Hand Towel dispenser is **easy-fill and easy-clean**. It also comes with both **lock or push button options**, so you can store your towels securely in situ.

Features:



DDA



Compact



Single Sheet
Dispensing



Streamline Design
Hygienic One-Piece Cover



Antibacterial
Protection
(White Dispensers only)



Lockable Option

Benefits:

✓ Easy fill ✓ Easy clean ✓ Slimline

Colours: White ABS, Black ABS or Stainless Steel



**OUR COMPACT HAND TOWEL DISPENSER IS
THE SLIMMEST ON THE MARKET!**



Compact Hand Towel Dispenser

Tech Specs:

Product code	FIG1904W (White ABS), FIG1904B (Black ABS), FIG1904S (Stainless Steel)
Product description	Compact hand towel dispenser
Dispenser material	ABS or Stainless Steel
Dispenser capacity	375 sheets
Dispenser dimensions	364 x 217 x 77 mm
Dispenser weight	0.8 kg/ABS, 1.4 kg/SS
Case quantity	6 pcs
Case dimensions	275 x 400 x 387 mm
Case weight	5.7 kg/ABS, 8.8 kg/SS
UK Pallet	1000 x 1200 x 2085 mm
Quantity per layer	6 cases/36 pcs
Quantity per pallet	30 cases/180 pcs
Weight per pallet	186 kg/ABS, 279 kg/SS (including 15 kg pallet)
Euro pallet	800 x 1200 x 2085 mm
Quantity per layer	4 cases/24 pcs
Quantity per pallet	20 cases/120 pcs
Weight per pallet	138 kg/ABS, 200 kg/SS (including 24 kg pallet)



*THE COMPACT, SLIMLINE
DESIGN IS DDA COMPLIANT.*



Luxury Foam Soap

FACT! Our specially formulated Luxury Foam Soap is the **most cost-effective soap on the market.**

FACT! Our coconut fragranced luxury foaming hand soap is **manufactured in the UK**, for a lower carbon footprint!

FACT! Our soap system has the **highest capacity on the market** with **up to 4,000 doses per refill** reducing labour time refilling!

The cartridges for this luxurious foam soap are **interchangeable** across all of our soap dispensers for total compatibility.

As the cost of soap is directly related to the amount of doses used and not the amount of liquid in one bottle, up to 4,000 doses per refill, that means **big savings** for you!

Features:



Cost Effective



High Capacity



Variable Dosage



Manufactured In UK



Coconut Fragranced

Benefits:

- ✓ Cost-effective
- ✓ Money saving
- ✓ Cartridge fits all FIG soap dispensers
- ✓ Economise habits
- ✓ High capacity

**OUR SOAP IS SPECIALLY FORMULATED
TO GO FURTHER. ONE REFILL HOLDS
UP TO 4000 DOSES!**



Luxury Foam Soap

Tech Specs:

Product code	FIG901C
Product description	FIG Luxury Foam Soap Coconut
Cartridge capacity	up to 4,000 doses
Case quantity	up to 24,000 doses (6 cartridges)
Case dimensions	125 x 390 x 270 mm
Case weight	6.2 kg
UK Pallet	1000 x 1200 x 2040 mm
Quantity per layer	24 cases
Quantity per pallet	168 cases (1,008 cartridges)
Weight per pallet	1,060 kg (including 15 kg pallet)
Euro pallet	800 x 1200 x 2040 mm
Quantity per layer	18 cases
Quantity per pallet	126 cases (756 cartridges)
Weight per pallet	808 kg (including 24 kg pallet)

ONE CASE OF
LUXURY FOAM SOAP =
OVER SEVEN 5LTR BOTTLES OF
LIQUID SOAP!



MANUFACTURED IN
THE UK.

Foaming Hand Sanitiser

FACT!

Our Foaming hand Sanitiser is the **most cost-effective sanitiser on the market** with up to **3,800 doses per refill!**

FACT!

It's lab-tested and proven **effective against covid-19** and conforms to EN14476.

FACT!

You can **Economise Habits** with our **variable dosage** capability.

The **fragrance-free** Foaming Hand Sanitiser will suit all users. The cartridges for the foam hand sanitiser and soap are **interchangeable** across all of our soap dispensers for total compatibility. Our hand sanitiser is also **manufactured in the UK**, so it has a **lower carbon footprint**.

Features:



Fragrance Free



High Capacity



Variable Dosage



Combats Covid-19



Manufactured in UK



Cost Effective

Benefits:

- ✓ Cost-effective
- ✓ Money saving
- ✓ Cartridge fits all FIG soap dispensers
- ✓ Economise habits

**LAB TESTED & PROVEN EFFECTIVE
AGAINST COVID-19, CONFORMING TO EN14476.**



Foaming Hand Sanitiser Tech Specs:

Product code	FIG906S
Product description	FIG Foaming Hand Sanitiser
Cartridge capacity	up to 3,800 doses
Case quantity	22,800 doses (6 cartridges)
Case dimensions	125 x 390 x 270 mm
Case weight	6.1 kg
UK Pallet	1000 x 1200 x 2040 mm
Quantity per layer	24 cases
Quantity per pallet	168 cases (1,008 cartridges)
Weight per pallet	1,036 kg (including 15 kg pallet)
Euro pallet	800 x 1200 x 2040 mm
Quantity per layer	18 cases
Quantity per pallet	126 cases (756 cartridges)
Weight per pallet	790 kg (including 24 kg pallet)

OUR SANITISER IS
ALCOHOL-FREE TO BE
EASIER ON THE SKIN.



MANUFACTURED IN
THE UK.

Manual Soap/Sanitiser Dispenser

FACT! Our Manual soap and sanitiser dispenser has the **highest capacity on the market**, one cartridge holds up to **4,000 doses**.

FACT! You can **Economise Habits** with our **variable dosage** capability.

FACT! To **reduce wastage** further, the **pumps are reusable** too!

The Manual Soap/Sanitiser Dispensers have a **one-piece cover**, making them easy to keep clean with no joins to gather germs and bacteria. The White ABS option also offers **Antibacterial Protection** impregnated into the cover to really stamp out those washroom germs! The **ergonomic design** of our dispensers fits any of our hand soap or sanitiser cartridges and **comes** with both **lockable and push button options**.

Features:



Highest Capacity



Variable Dosage System



Reduces Waste



Streamline Design
Hygienic One-Piece Cover



Antibacterial Protection
(White Dispensers Only)



Lock Or Push
Button Options



Easy Access

Benefits:

- ✓ Most cost-effective system on the market
- ✓ Economising habits
- ✓ Easy-fill
- ✓ Easy-clean
- ✓ All FIG soap dispensers use the same cartridge

Colours: White ABS, Black ABS or Stainless Steel



**MOST COST-EFFECTIVE, HIGHEST CAPACITY
DISPENSER ON THE MARKET.**



Manual Soap/Sanitiser Dispenser

Tech Specs:

Product code	FIG1901W (White ABS), FIG1901B (Black ABS), FIG1901S (Stainless Steel)
Product description	Manual soap/sanitiser dispenser
Dispenser material	ABS or Stainless Steel
Dispenser capacity	Up to 4,000 doses
Dispenser dimensions	260 x 134 x 118 mm
Dispenser weight	0.7 kg/ABS, 1.2 kg/SS
Case quantity	6 pcs
Case dimensions	307 x 390 x 285 mm
Case weight	4.4 kg/ABS, 7.4 kg/SS
UK Pallet	1000 x 1200 x 2145 mm
Quantity per layer	9 cases/54 pcs
Quantity per pallet	63 cases/378 pcs
Weight per pallet	290 kg/ABS, 481 kg/SS (including 15 kg pallet)
Euro pallet	800 x 1200 x 2145 mm
Quantity per layer	6 cases/36 pcs
Quantity per pallet	42 cases/252 pcs
Weight per pallet	207 kg/ABS, 335 kg/SS (including 24 kg pallet)

HOLDS UP TO
4,000 DOSES PER
CARTRIDGE!

THE PUMP IS REUSABLE,
MEANING LESS WASTAGE!



Auto Soap/Sanitiser Dispenser

FACT!

The automatic dispensing function **removes a touchpoint** where germs can spread.

FACT!

You can take control over how much is dispensed on each pump and **reduce wastage** thanks to the **inbuilt variable dosage system**.

FACT!

Our dispensers are designed with **hygienic one-piece covers**, meaning they are easy to keep clean with no join crevices to gather dirt and germs.

The **ergonomic** design of our dispensers **fits any of our hand soap or sanitiser cartridges** and comes with both **lockable and push button options** to cater for any washroom environment.

The White ABS cover is impregnated with an Antibacterial Protection formula so no nasties can linger on them for long either. To **reduce wastage** further, the **pumps are reusable** too!

Features:



Variable Dosage



Streamline Design
Hygienic One-Piece Cover



Reduce Waste



Antibacterial
Protection
(White Dispenser Only)



Easy Access



Lockable Option

Benefits:

- ✓ Interchangeable refills fit all soap dispensers
- ✓ Easy-fill
- ✓ Easy-clean
- ✓ Reusable pump

Colours: White ABS, Black ABS or Stainless Steel



**REMOVES UNNECESSARY TOUCH POINTS
FOR TRUE HAND HYGIENE.**



Auto Soap/Sanitiser Dispenser

Tech Specs:

Product code	FIG1902W (White ABS), FIG1902B (Black ABS), FIG1902S (Stainless Steel)
Product description	Auto soap/sanitiser dispenser
Dispenser material	ABS or Stainless Steel
Dispenser capacity	Up to 2,000 doses
Dispenser dimensions	260 x 134 x 118 mm
Dispenser weight	0.9 kg/ABS, 1.4 kg/SS
Case quantity	6 pcs
Case dimensions	307 x 390 x 285 mm
Case weight	5.6 kg/ABS, 8.6 kg/SS
UK Pallet	1000 x 1200 x 2145 mm
Quantity per layer	9 cases/54 pcs
Quantity per pallet	63 cases/378 pcs
Weight per pallet	366 kg/ABS, 557 kg/SS (including 15 kg pallet)
Euro pallet	800 x 1200 x 2145 mm
Quantity per layer	6 cases/36 pcs
Quantity per pallet	42 cases/252 pcs
Weight per pallet	258 kg/ABS, 385 kg/SS (including 24 kg pallet)

TRUE RELIABILITY.
THE INTERNAL MECHANISM HAS
BEEN TRIED AND TESTED OVER
THE PAST TEN YEARS!

SEAMLESS ONE-PIECE
COVER DESIGN THAT'S MORE
HYGIENIC AND EASY TO CLEAN.



Antibacterial Protection

The Science bit!

ALL OUR WHITE ABS DISPENSERS ACROSS THE RANGE BOAST OF PROTECTION FROM WITHIN, USING THE SCIENCE OF ION ANTIBACTERIAL PROTECTION.

But what does that mean and how does it work?

FACT!

Ion Antibacterial Protection is the result of adding a **silver & zinc anti-bacterial formula** to our White ABS products during manufacturing.

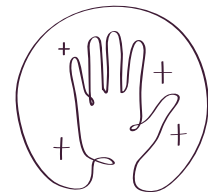
FACT!

Developed from the combination of an inorganic ion-exchanger and silver & zinc ions, it has **strong bactericidal** abilities, a **higher temperature resistance**, **better safety** and **longer-term sterilization** effect than organic anti-bacterial additives.

FACT!

As an additive in the manufacturing process it's **scratch-resistant**, the **anti-bacterial** properties go right through the product and not just on the surface, and it **lasts indefinitely**.

A SPECIALLY FORMULATED BUG AND GERM-KILLING INGREDIENT ADDED TO OUR DISPENSERS THAT LASTS INDEFINITELY.



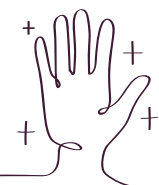
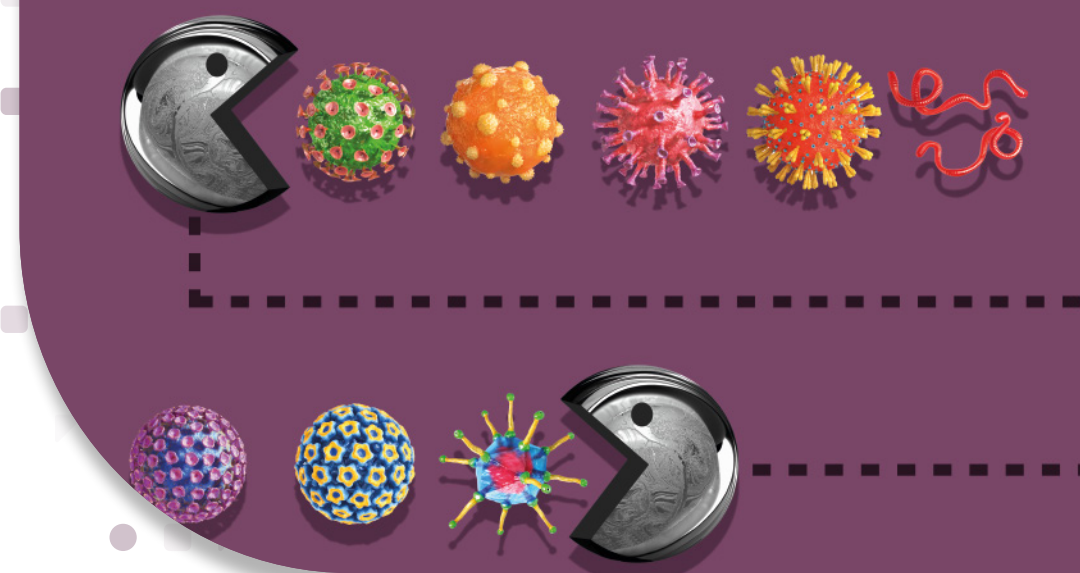
All of our White ABS covers are impregnated with Ion **Antibacterial Protection** so no nasties can linger on them for long.

How it works:

The formula contains silver particles (Ag+) & zinc which kill bacteria when they oxidize and release ions, by penetrating or attaching to the cell membrane. Once the bacteria are eliminated, the Ag+ and Zinc particles remain active and continue to kill other bacteria by repeating the process.

Features & Benefits:

- ✓ A broad-spectrum anti-bacterial additive with high safety and long-term sterilization.
- ✓ Harmless to the human body, it is non-irritant and non-toxic.
- ✓ High chemical and thermal stability. It can resist temperatures up to 300°C, with no discolouration when used with many plastic resins and almost no impact on material processing.
- ✓ Long-life anti-bacterial properties means it could be active with high polymer material permanently.
- ✓ Acid and alkali resistant, great durability and a slow release, ensuring its efficacy for many years.
- ✓ Effective on a wide range of bacteria types (up to 99% of Escherichia coli, Staphylococcus aureus and Candida albicans).



Dimensions & Weights

Product Code	Description	Carton Width mm	Carton Length mm	Carton Height mm	Carton Weight kg	Carton CBM	Cartons per Layer	Cartons per Pallet	Pcs per Pallet	KGs per Layer	Kgs per pallet	Cartons per Layer	Cartons per Pallet	Pcs per Pallet	KGs per Layer	Kgs per pallet
							800 x 1200 mm Euro Pallet					1000 x 1200 mm UK Pallet				
903M	Ecomatic Classic	400	400	295	7.47	0.047	6	42	N/A	44.8	313.7	6	42	N/A	44.8	313.7
903L	Ecomatic Luxury	400	400	293	6.31	0.047	6	42	N/A	379	265.0	6	42	N/A	379	265.0
904R	Compact hand towels Recycled	260	565	190	4.6	0.028	6	60	N/A	276	276.0	6	60	N/A	276	276.0
904V	Compact hand towels Virgin	260	565	190	4.6	0.028	6	60	N/A	276	276.0	6	60	N/A	276	276.0
904B	Compact hand towels Bamboo	313	398	370	7.4	0.046	6	30	N/A	44.4	222.0	9	45	N/A	66.6	333.0
905RW	Autocut roll towel Recycled White	415	600	205	9.27	0.051	4	40	N/A	371	370.8	4	40	N/A	371	370.8
905RB	Autocut roll towel Recycled Blue	365	533	200	7.32	0.039	4	40	N/A	29.3	292.8	4	40	N/A	29.3	292.8
905B	Autocut roll towel Bamboo	365	535	200	8.15	0.039	4	40	N/A	32.6	326.0	4	40	N/A	32.6	326.0
901C	Foam soap	125	390	270	6.22	0.013	18	126	756	112.0	783.7	24	168	1008	149.3	1045.0
906S	Sanitiser	125	390	270	6.08	0.013	18	126	756	109.4	766.1	24	168	1008	145.9	1021.4
1903	Ecomatic dispensers	373	515	342	6.31	0.066	4	24	144	25.2	151.4	4	24	144	25.2	151.4
1904	Compact hand towel dispensers	275	470	387	5.74	0.050	4	20	120	23.0	114.8	6	30	180	34.4	172.2
1905	Autocut dispensers*stood on its end	477	630	387	11.22	0.116	3	12	48	33.7	134.6	6	18	72	67.3	202.0
1901	Manual soap dispensers	307	390	285	4.36	0.034	6	42	252	26.2	183.1	9	63	378	39.2	274.7
1902	Auto soap dispensers	307	390	285	5.57	0.034	6	42	252	33.4	233.9	9	63	378	50.1	350.9
1903C	Core catchers	N/A	N/A	N/A	N/A	N/A	N/A	N/A	N/A	N/A	N/A	N/A	N/A	N/A	N/A	N/A
1903S	Ecomatic dispensers SS	373	515	342	10.1	0.066	4	24	144	40.4	242.4	4	24	144	40.4	242.4
1904S	Compact hand towel dispensers SS	275	470	387	TBC	0.050	4	20	120	TBC	TBC	6	30	180	TBC	TBC
1905S	Autocut dispensers SS Covers Only*	477	630	387	TBC	0.116	3	12	48	TBC	TBC	3	12	48	TBC	TBC
1901S	Manual soap dispensers SS	307	390	285	TBC	0.034	6	42	252	TBC	TBC	9	63	378	TBC	TBC
1902S	Auto soap dispensers SS	307	390	285	TBC	0.034	6	42	252	TBC	TBC	9	63	378	TBC	TBC

WE'VE GOT WASHROOMS
FIGURED OUT!



FIG Products Ltd, 2F Queensway, Hampshire, BH25 5NN

sales@figproducts.com | +44 (0)1425 205 527 | figproducts.com